



MOUNT NANSEN
REMEDiation LP 

Mount Nansen Mine Remediation Project

Dan Yedek'i Community Meeting

Little Salmon Carmacks First Nation

April 6, 2023

Today's Presentation

1. Project History
2. Remediation & CM Contract
3. Care & Maintenance
4. Remediation Plan
5. YESAA Process
6. Schedule
7. Job, Contracting, and Training Opportunities

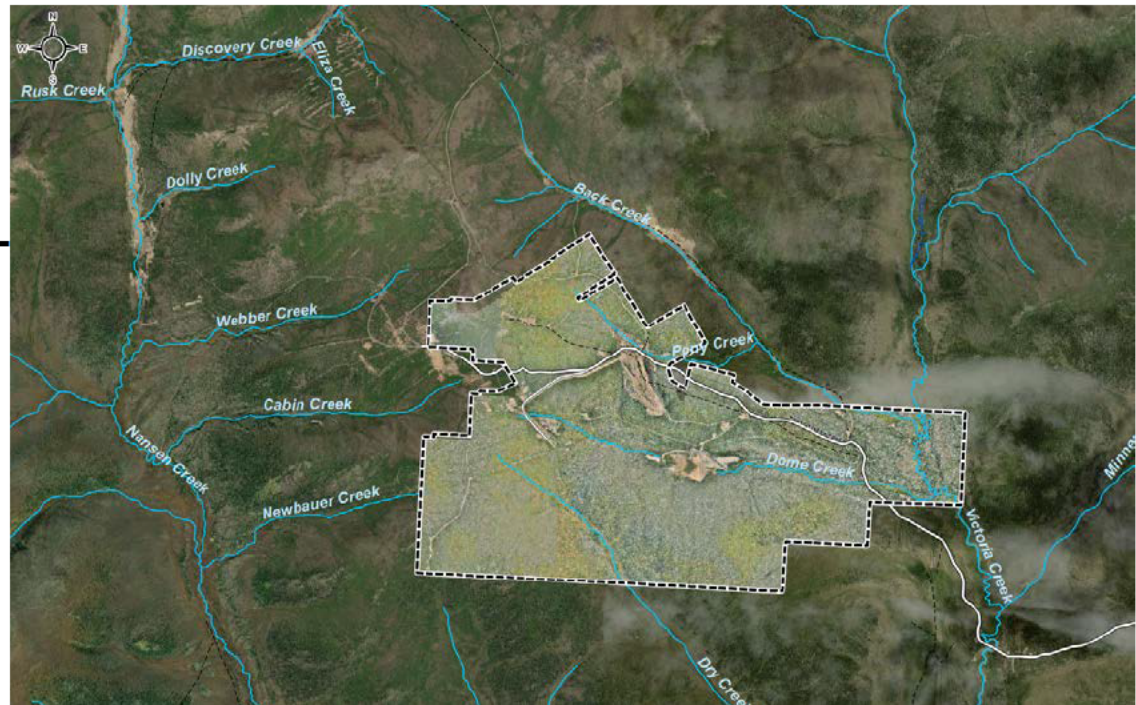


- MNRLP is committed to working with LSCFN on the remediation plan for Mount Nansen Mine
- Ways we do this:
 - Dan Yedek'i meetings
 - Implementing the Project Benefits Agreement
 - Project Working Group meetings
 - Technical meetings

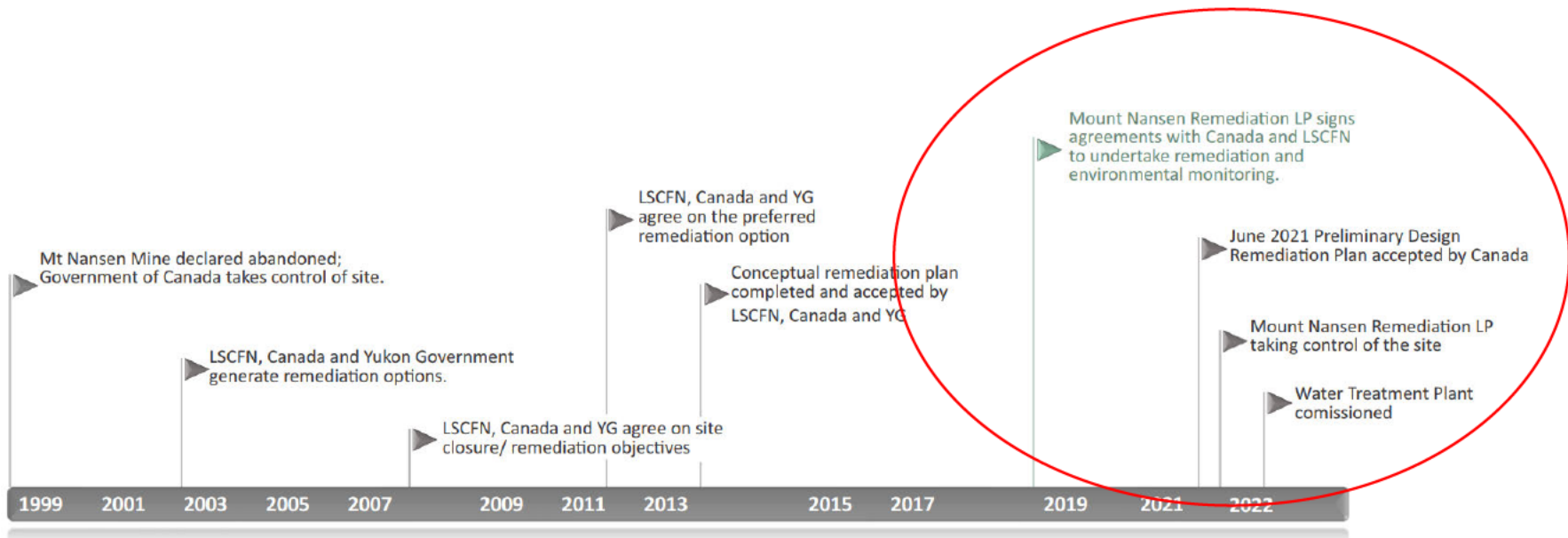


Mining at Mount Nansen

- Abandoned gold (and silver) mine 60 km west of Carmacks.
- BYG Natural Resources Inc. mined the site 1996-99.
- Other BYG historic mining sites outside the MNRLP lease area for the project
 - Webber
 - Flex



Remediation Plan – History



- LSCFN, Canada and YG have been discussing Mount Nansen remediation since 2003
- Canada granted MNRLP a contract to perform Care & Maintenance of the site and plan remediation in 2019
- MNRLP is a partnership between Ensero Solutions and JDS Energy & Mining



- LSCFN's Consultation and Accommodation Plan
- Developed April 13, 2022
- Sets out the requirements for consultation and accommodation with LSCFN on the Mount Nansen Remediation Project.

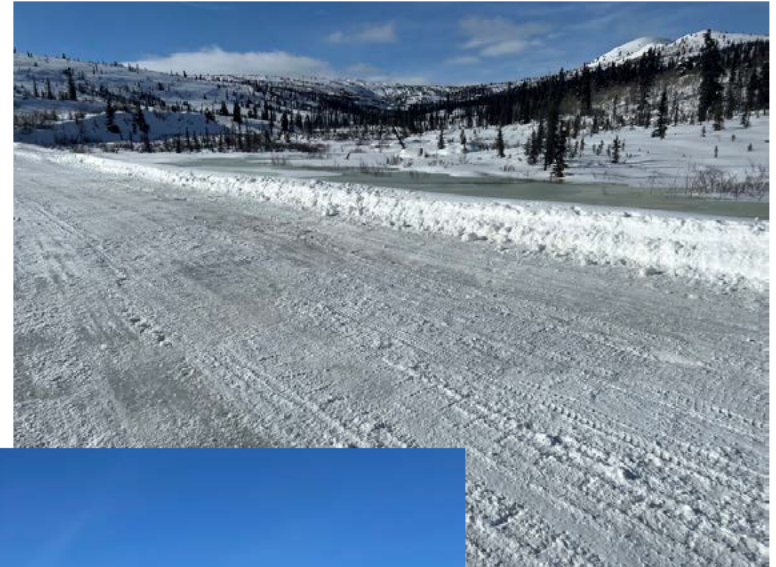


Where are we now?

- Care and Maintenance
- Treating Water from the Seepage Pond and TSF (water was previously untreated)
- Engagement and Consultation (Dan Yedek'i)
- YESAA Assessment



- Winter road maintenance
- Daily monitoring
- Site security
- Water Treatment
- Environmental monitoring



Water Treatment

- Water treatment plant treated 52,434 m³ of water in 2022
- Treating metals including arsenic, iron, manganese, zinc, copper, and cadmium, along with Total Suspended Solids (TSS)
- Discharging water that meets the effluent quality standards in the Water Licence

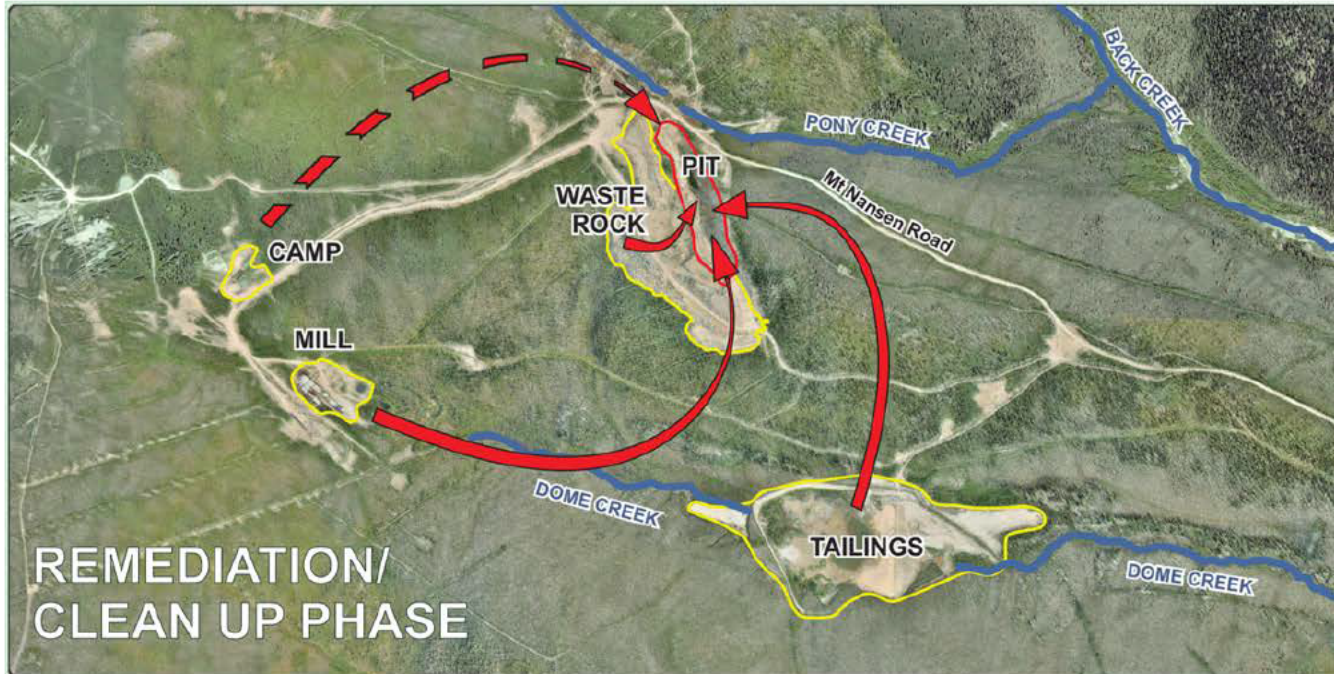


Current LSCFN Employment & Contracting

- LSCFN Employees
- LSCFN Businesses 32% of contract work value in 2022
- Example LSCFN Businesses per PBA list
 - Tutchone Environmental
 - North 60 Petro
 - Borealis Propane
 - Mueller Electric
 - High Wind

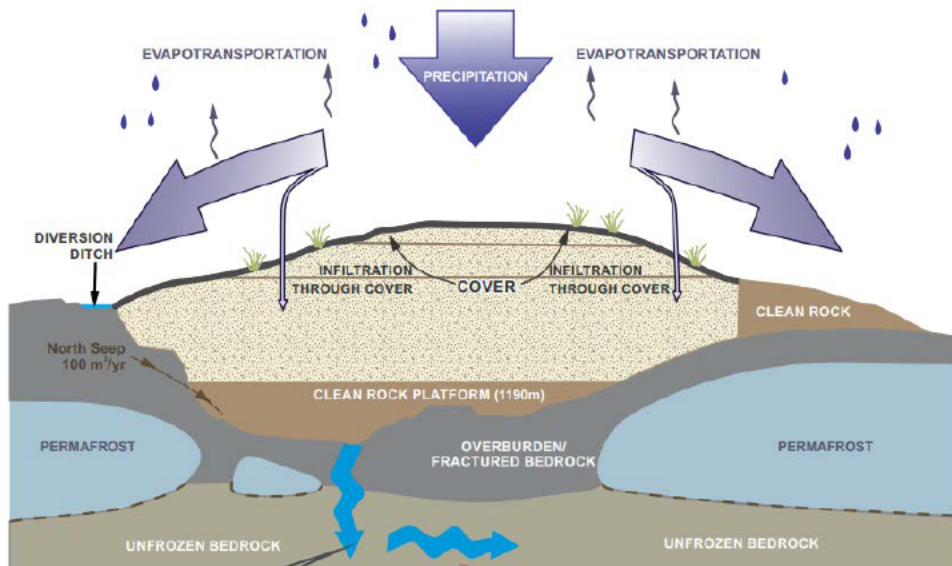


Remediation Plan

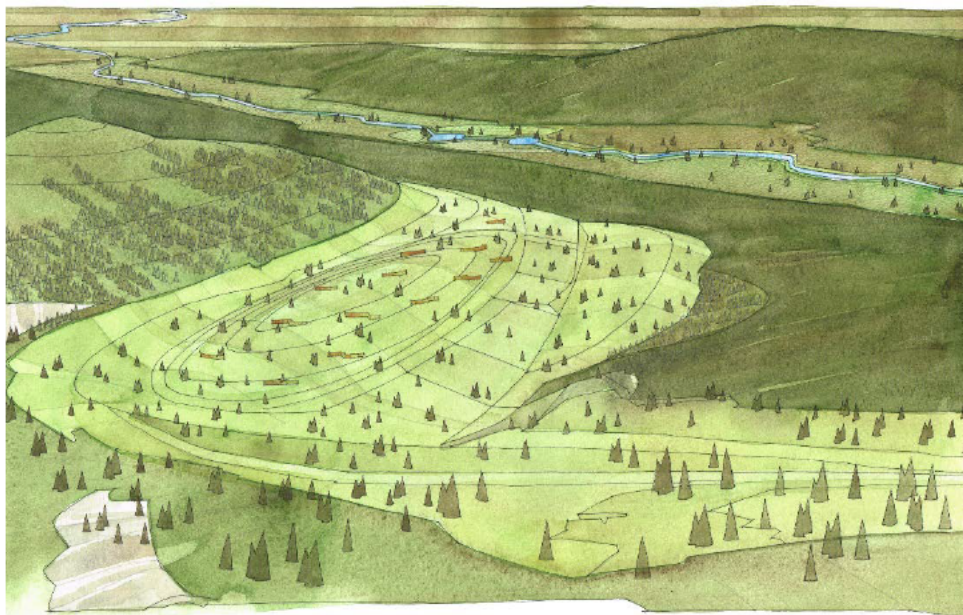


Mine tailings, waste rock and other waste material will be placed in the open pit and covered with an engineered barrier liner system.

- Move tailings, waste rock, and stockpiled ore to the Pit Containment Structure (PCS) (Season 1 & 2)
- Demolish mill buildings and other infrastructure (Season 2 & 3)



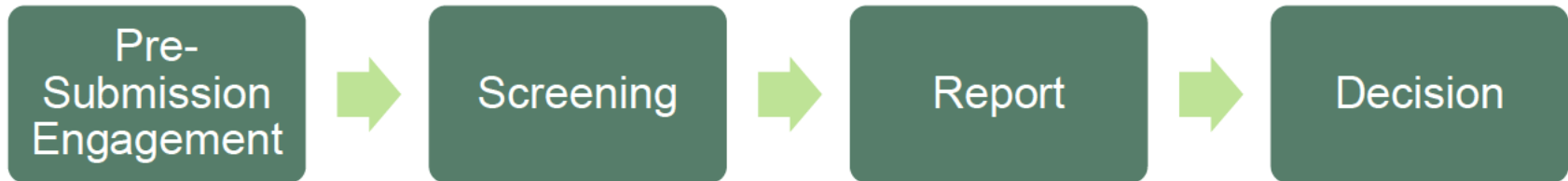
Remediation Plan



Canada, YG, and LSCFN agreed to remediation / closure objectives in 2008 – to be applied in site remediation:

- Protect **human health and safety**.
- Protect the **environment** including land, air, water, fish and wildlife.
- **Return the mine site to an acceptable state of use** that reflects original use where possible.
- Maximize local, Yukon and First Nation **benefits**.
- Reduce government liability and **risk**

YESAA Submission



- Pre-submission Engagement (PSE) allows collaboration with First Nations and Stakeholders about what's important about the project before the full assessment is completed
- LSCFN's Dan Yedek'i (Consultation and Accommodation Plan) will continue through the PSE process
- High level Project Description – August – October 2022
- Project Proposal Guideline – December 2022 – April 2023
 - what is valued about the project to assess, and what information must be provided

YESAA Pre-Submission Engagement Process

- Current stage – Draft Project Proposal Guideline review
- LSCFN has provided feedback to YESAB regarding Project Description
- Feedback on the draft guideline due April 17, 2023



YESAA Pre-Submission Engagement with LSCFN

- LSCFN has requested engagement on these items

How and when should this happen?

Nansen LSCFN Engagement/Consultation
Closure Objective details & standards
Areas outside the project
Traditional & community knowledge
Human health & ecological risks
Water & soil standards
Revegetation
Pit containment structure
Fish in Dome Creek
Adaptive management

YESAA Pre-Submission Engagement with LSCFN

- YESAB has requested things that need LSCFN engagement

MNRLP will be returning to the community to collect your input

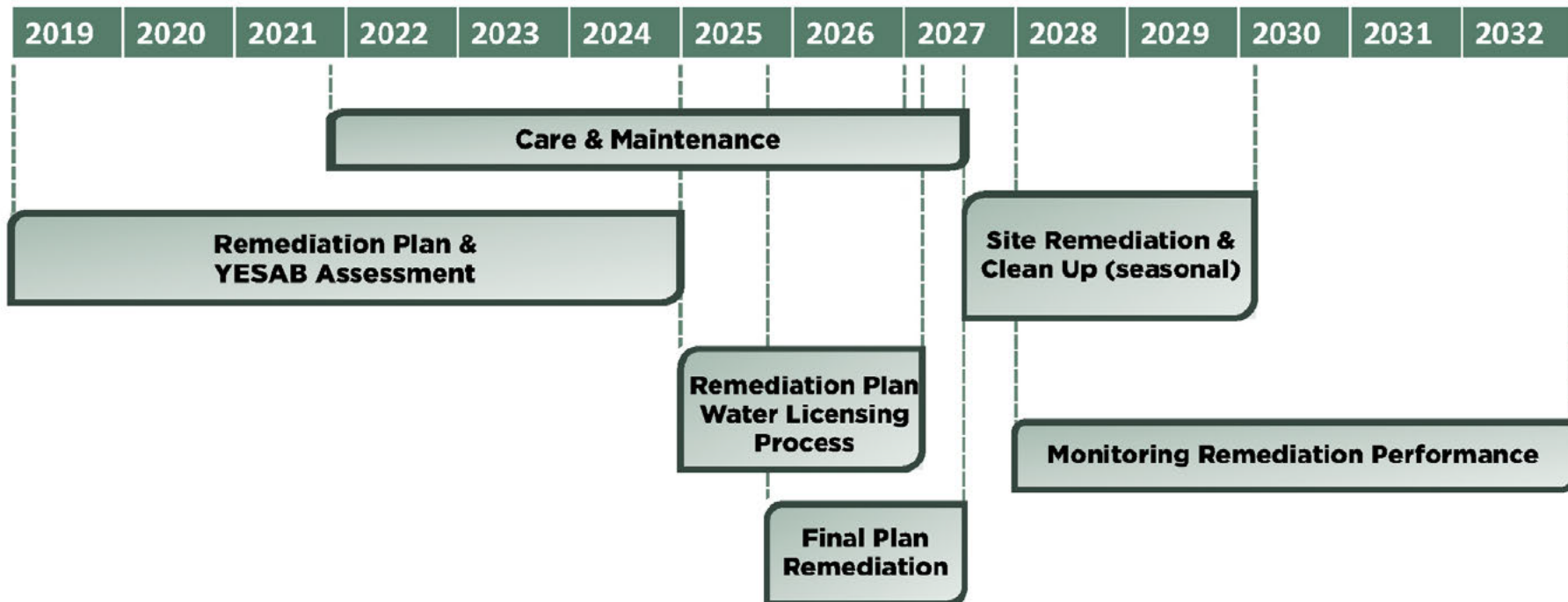
YESAA LSCFN Engagement/Consultation
Perceptions of the project impacts & opportunities
How work at Nansen has affected culture, way of life, health, wellbeing, trust
Assessment boundaries
Project effects on all aspects
Important wildlife species
Harvesting uses
Sense of place and cultural continuity, disconnection/belonging

YESAA Pre-Submission Engagement Next Steps

- Comments on draft PPG
- PPG Response
- Consultation with LSCFN
- Data gap filling
 - Traditional knowledge
 - Blackened vegetation
 - Socio-economic
- Project Proposal



Project Schedule



Participation and Benefits Agreement with LSCFN

- Revenue sharing.
- Training, employment, and contracting opportunities.
- Involvement in continuing to develop remediation plan.
- Involvement in YESAA and Water Licence applications and processes.
- Ongoing meetings, communication and reporting.



Opportunities: Care & Maintenance

- Care & Maintenance – Until Remediation
 - **Mount Nansen Coordinator** – **OPEN NOW** with LSCFN
 - **CM Team** – infill for existing positions
 - 3 of 6 members of CM team are LSCFN
 - Part-time Environmental Monitor positions
 - Contracts (fuel supply, waste management, surveying, winter road maintenance, etc.)



Opportunities: Seasonal - Remediation

- Remediation (3 seasons)
 - **25-35 seasonal hires** (including management/supervisor, labourer and other positions)
 - Part-time Environmental Monitor positions
 - Contracts (earth-moving, camp services, fuel supply, waste management, surveying, etc.)





Training

- Care & Maintenance
 - Specialized training: Water Treatment Plant Operator
 - Environmental Monitoring, Assessment & Licensing
- Remediation
 - Earth-moving / Construction Equipment Operation
 - Environmental Monitoring, Assessment & Licensing



1. Dan Yedek'i (Consultation and Accommodation)
2. Advancing the Project through the Yukon Environmental and Socio-economic Assessment Board PSE Process
3. Developing the Detailed Design Remediation Plan

➤ How can you participate?

- Contact  or 
- Attend further Dan Yedek'i community meetings
- Follow us on Facebook:
<https://www.facebook.com/mnrlyukon>
- See website www.mnrly.com

*Together, we
can clean up
and reclaim the
Mount Nansen
Mine Site!*

